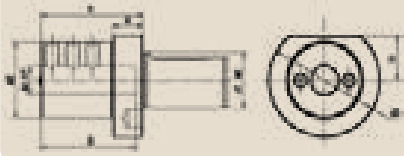


DIN 69880 VDI TOOL HOLDERS

DIN 69880 VDI TUTUCULAR



Form E2 Boring Bar Holder / Delik Kateri Tutucu

| CODE / KOD | d1 VDI | d2 | d3 | d4 | h1 | l1 | l2 | l3 | EURO |
|------------|--------|----|----|----|------|----|----|----|--------|
| E2-20x8 | VDI 20 | 40 | 50 | 8 | 23 | 50 | 18 | 42 | 58.00 |
| E2-20x10 | VDI 20 | 40 | 50 | 10 | 23 | 50 | 18 | 42 | 58.00 |
| E2-20x12 | VDI 20 | 40 | 50 | 12 | 23 | 50 | 18 | 42 | 58.00 |
| E2-20x16 | VDI 20 | 42 | 50 | 16 | 23 | 50 | 18 | 42 | 58.00 |
| E2-20x20 | VDI 20 | 49 | 50 | 20 | 23 | 50 | 18 | 42 | 58.00 |
| E2-30x8 | VDI 30 | 55 | 68 | 8 | 28 | 60 | 22 | 43 | 62.00 |
| E2-30x10 | VDI 30 | 55 | 68 | 10 | 28 | 60 | 22 | 43 | 62.00 |
| E2-30x12 | VDI 30 | 55 | 68 | 12 | 28 | 60 | 22 | 43 | 62.00 |
| E2-30x16 | VDI 30 | 55 | 68 | 16 | 28 | 60 | 22 | 55 | 62.00 |
| E2-30x20 | VDI 30 | 55 | 68 | 20 | 28 | 60 | 22 | 54 | 62.00 |
| E2-30x25 | VDI 30 | 55 | 68 | 25 | 28 | 60 | 22 | 54 | 62.00 |
| E2-30x32 | VDI 30 | 67 | 68 | 32 | 28 | 75 | 22 | 61 | 62.00 |
| E2-40x10 | VDI 40 | 55 | 83 | 10 | 32.5 | 75 | 22 | 43 | 71.00 |
| E2-40x12 | VDI 40 | 55 | 83 | 12 | 32.5 | 75 | 22 | 58 | 71.00 |
| E2-40x16 | VDI 40 | 55 | 83 | 16 | 32.5 | 75 | 22 | 61 | 71.00 |
| E2-40x20 | VDI 40 | 55 | 83 | 20 | 32.5 | 75 | 22 | 61 | 71.00 |
| E2-40x25 | VDI 40 | 55 | 83 | 25 | 32.5 | 75 | 22 | 61 | 71.00 |
| E2-40x32 | VDI 40 | 82 | 83 | 32 | 32.5 | 75 | 22 | 61 | 71.00 |
| E2-40x40 | VDI 40 | 82 | 83 | 40 | 32.5 | 90 | 22 | 76 | 71.00 |
| E2-50x16 | VDI 50 | 68 | 98 | 16 | 35 | 90 | 30 | 76 | 108.00 |
| E2-50x20 | VDI 50 | 68 | 98 | 20 | 35 | 90 | 30 | 76 | 108.00 |
| E2-50x25 | VDI 50 | 68 | 98 | 25 | 35 | 90 | 30 | 76 | 108.00 |
| E2-50x32 | VDI 50 | 69 | 98 | 32 | 35 | 90 | 30 | 76 | 108.00 |
| E2-50x40 | VDI 50 | 98 | 98 | 40 | 35 | 90 | - | 76 | 108.00 |